

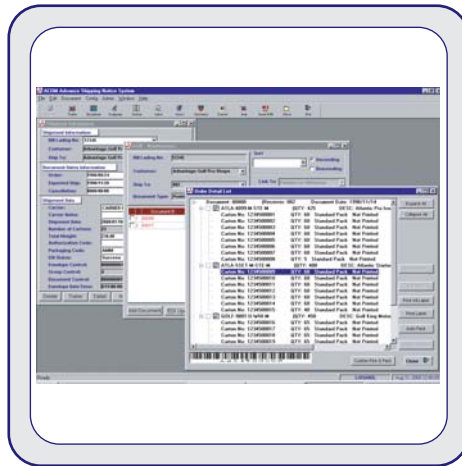
ARRIVAL DATE	CUSTOMER NO.	SHIP TO
3/23/01	476800	
ORDER DATE	BILL TO	P.O. NO.
1/18/01	565000	41902253082
PROD #	PACK	
630067	1/TOTE	

Advanced Shipping Notice

Data Translation
 Data Management
 Partner Communication

Finally, an EDI/XML solution that is fully automated, affordable, and easy to implement.

More and more companies today are mandating the use of ASN (Advanced Shipping Notice) as a requirement of doing business. ACOM's EZConnect-ASN is designed for these partners, and companies doing business with them. EZConnect-ASN allows small to mid-size suppliers to provide goods to any major retailer and generate ASNs from purchase orders, invoices or picking tickets. Barcode labels on all shipments, coupled with ASNs are sent electronically from suppliers, allowing retailers to receive and stock merchandise faster, with fewer mistakes.

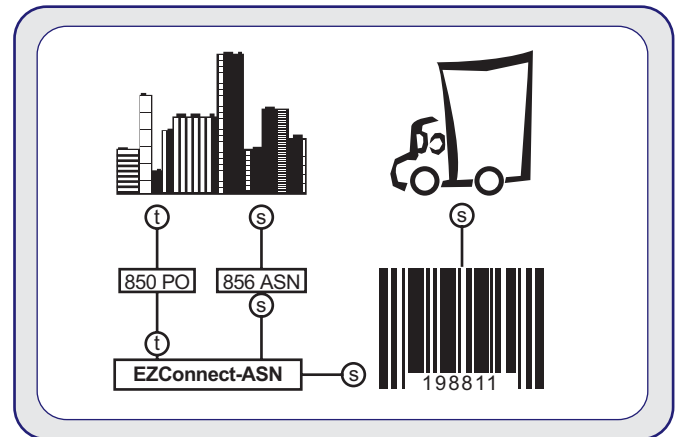


Features and Benefits

- Processes data directly from your business system (sales orders, invoices, posted invoices, etc.).
- Ensures that items do not get duplicate shipped.
- Generates barcodes directly from the application without custom integration.
- Built-in interface to link to external barcode systems.
- Import and export capability from external applications, including warehouse systems and barcode generators.
- Data entry screens for users without external systems.
- Supports multiple users with different access levels.
- Generates Bill of Lading reports.

EZConnect-ASN allows users to process data directly from their business system, as well as manage shipments, shipping containers, documents, cartons, labels, users, customers, and carriers.

EZConnect is compliant with all EDI standards, including X12 and EDIFACT, and supports several XML formats.



- Manages shipments, shipping containers, documents, companies, cartons, labels, users, customers, carriers, and items all within the ASN application.
- Electronic generation of the ASN in EDI (X12/EDIFACT) or XML formats.
- Electronic support for Carrier Shipment Status transmissions.
- Enforces all additional data requirements for ASN and ensures that your barcode labels match the electronic notification.
- Upgrade option for your other e-commerce (EDI/XML) requirements.
- Does not conflict with pre-existing EDI or XML interfaces.